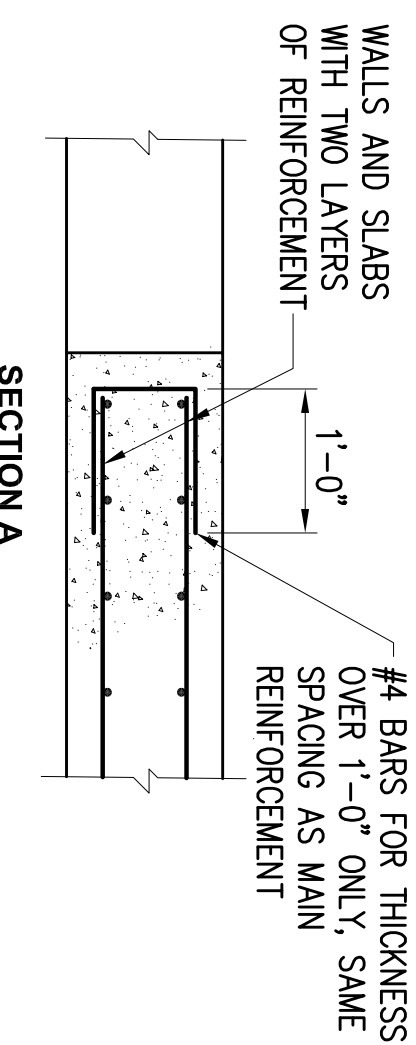
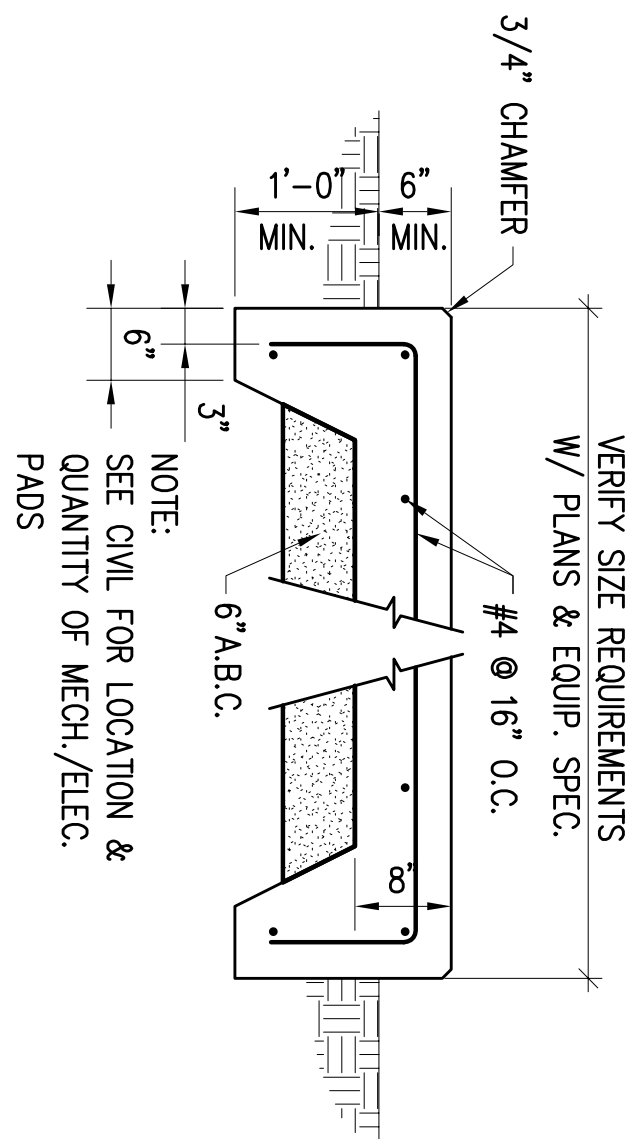


- NOTES:**
1. PROVIDE ADDITIONAL BARS WITH AREA EQUAL TO INTERRUPTED REINF. PLACE ONE HALF EXTRA BARS EACH SIDE OF OPENING. USE MINIMUM SPACING.
 2. DETAILS ARE LIMITED TO OPENINGS OF LESS THAN 20% OF CLEAR SPAN BUT NOT LARGER THAN 6'-0" EACH WAY UNLESS NOTED OTHERWISE ON DETAIL DRAWINGS.
 3. IN WALLS THE BOTTOM CORNER BARS MAY BE OMITTED IF BOTTOM OF THE OPENING OCCURS AT FLOOR SLAB.



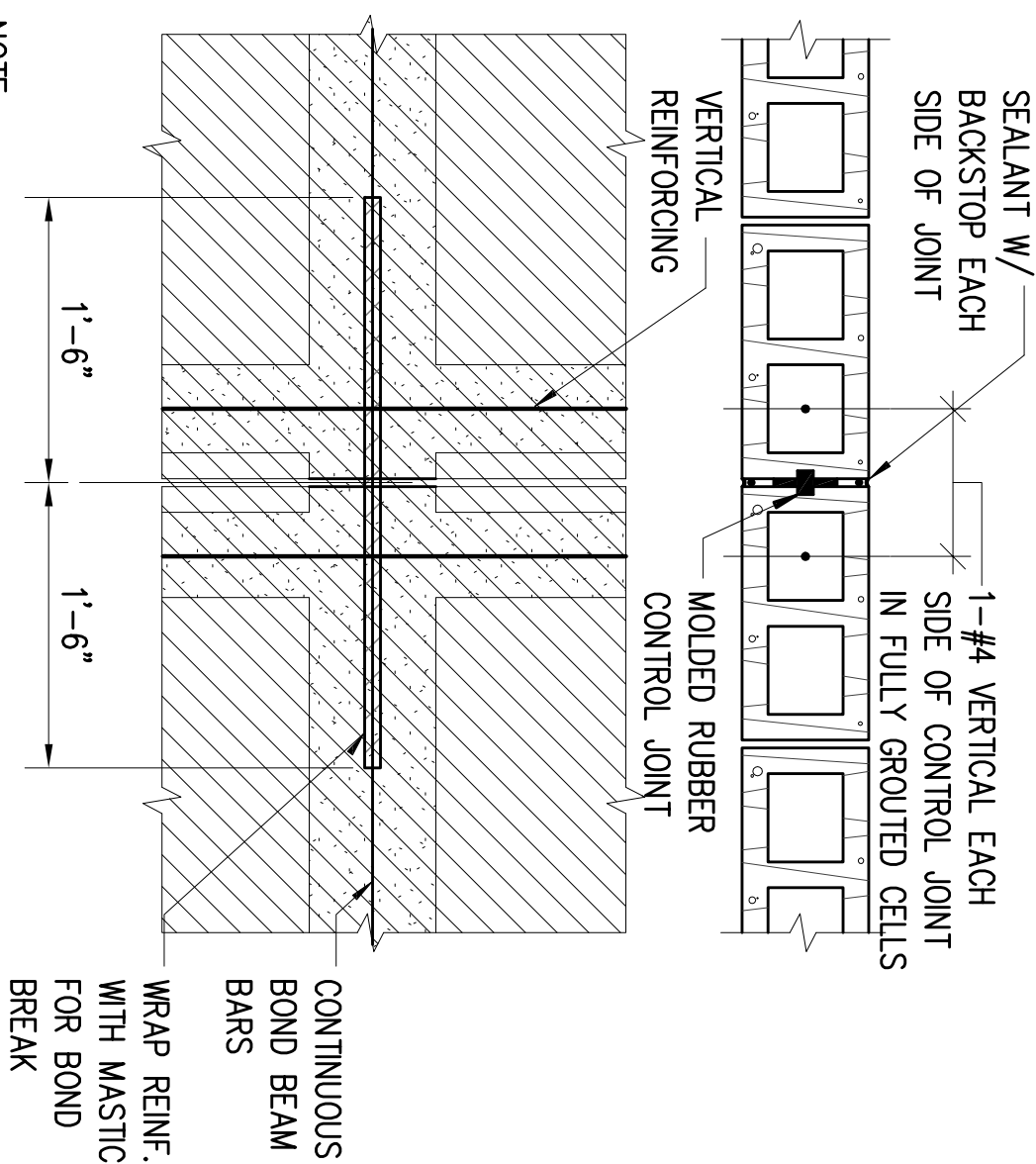
ADDED REINFORCEMENT @ SLAB OPENING
N.T.S.

4



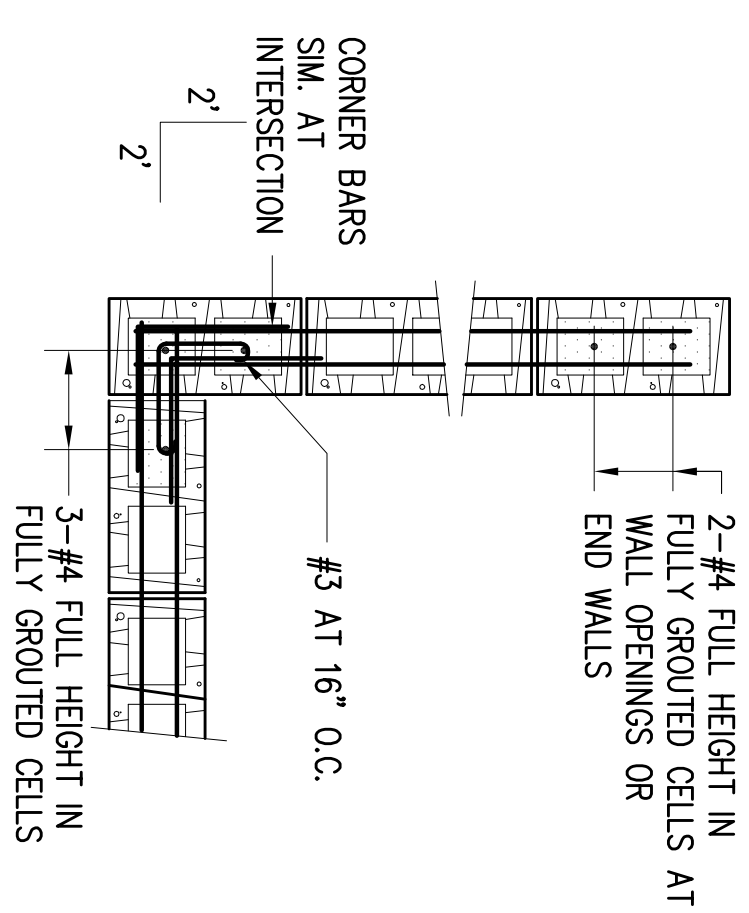
EQUIPMENT PAD
N.T.S.

1



TYP. CMU CONTROL JOINT
N.T.S.

2



TYP. CMU WALL REINF. @ CORNERS
N.T.S.

3



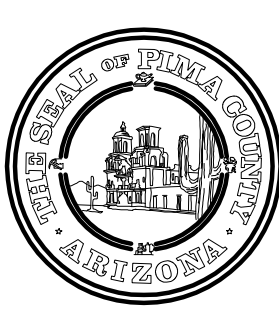
ARCHITECTURE
ENGINEERING
CONSTRUCTION MANAGEMENT

2051 W. SUNSET RD.
SUITE NO. 101
TUCSON, ARIZONA 85704

TEL. (520) 293-1488
FAX (520) 293-6349
WWW.M3PN.COM

RICHEY BLVD. FUEL TANK REPLACEMENT

PIMA COUNTY
FACILITIES MANAGEMENT
150 WEST CONGRESS, 5TH FL.
TUCSON, AZ 85701



Revisions

Description	Date

Drawn: JA
Checked: IB
Issue Date: 12-17-2010

Drawing Title
STRUCTURAL SECTIONS & TYPICAL DETAILS

Sheet Number
SJ502

M3PN 100100
Last Update: 7.1.2011